

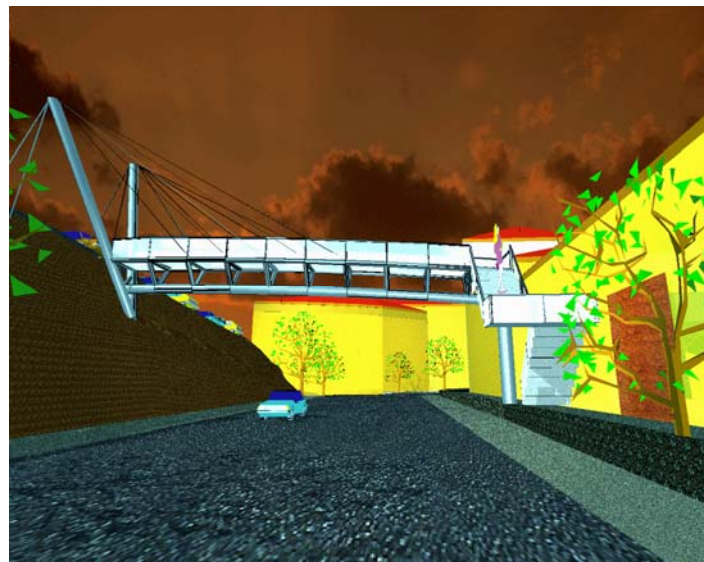
Passagem Superior Para Peoes in Covilha

Location	Covilha, Portugal
Date	1998
Services	Preliminary and detailed design
ABES member	ABES Portugal - GIPAC



Description

The aim of this pedestrian bridge was to make the crossing between a public car park in an elevated height, and the other side of an urban road. The bridge is a tubular-steel structure with a span of 16m and a cross-section width of 1.5m. The structure is supported by a single pier on one side, while cable stays with a maximum length of 16m provide support from the car park side. The side façades are made of transparent polycarbonate material.



Project visualisation of Passagem Superior Para Peoes in Covilha