

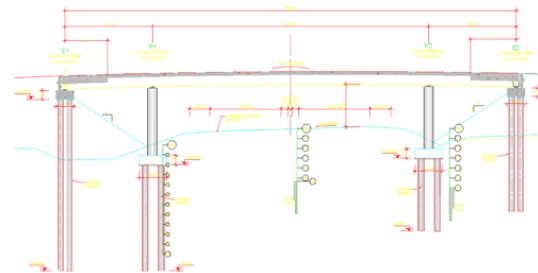
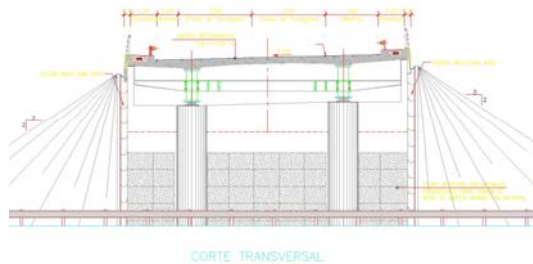
## Passagem Superior PS21B (1 / 2)

Location	<b>Portugal</b>
Client	MARTIFER, S.A
Date	2006
Services	Detailed design
ABES member	ABES Portugal - <b>GIPAC</b>

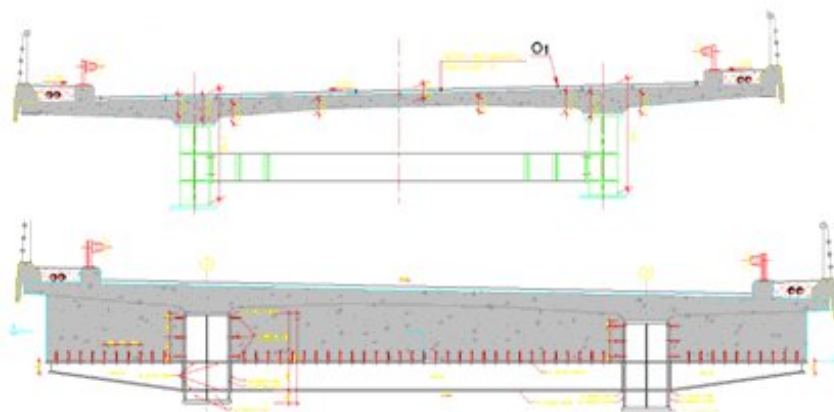


### Description

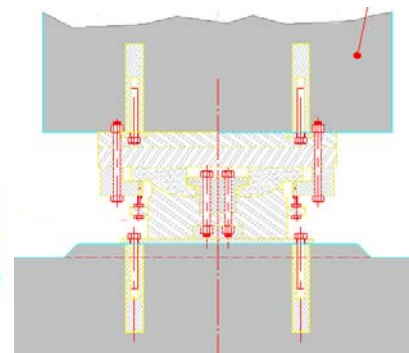
The superstructure of this 3-span composite bridge consists of two steel I-girders in the longitudinal direction topped by a precast concrete slab. Cross-beams made from steel are placed at regular intervals in the spans and concrete cross-beams are placed above the piers. The abutments and both piers are at a skew angle to the main direction.



Longitudinal section through bridge structure.



Cross-section at mid-span and above the piers.



Bearing detail

## Passagem Superior PS21B (2 / 2)

