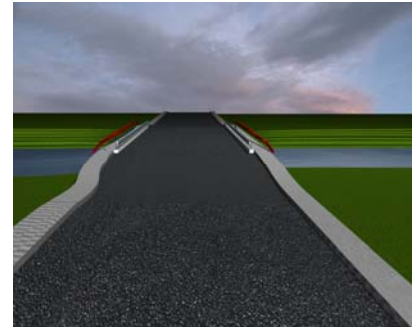


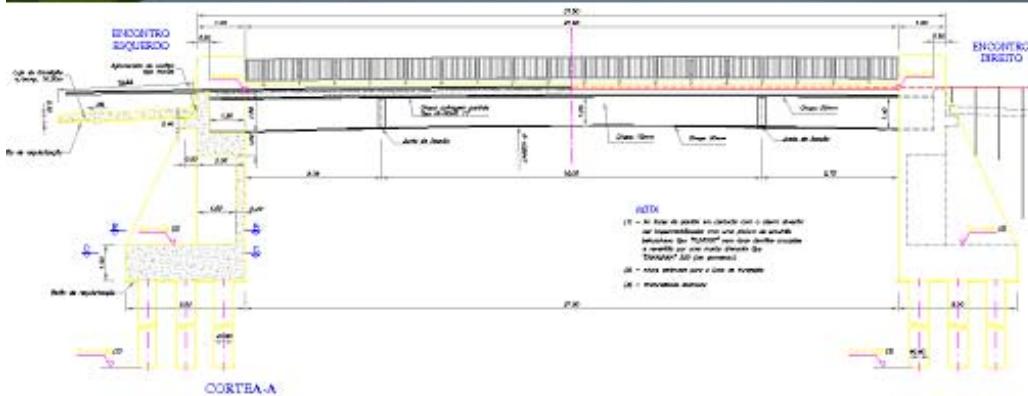
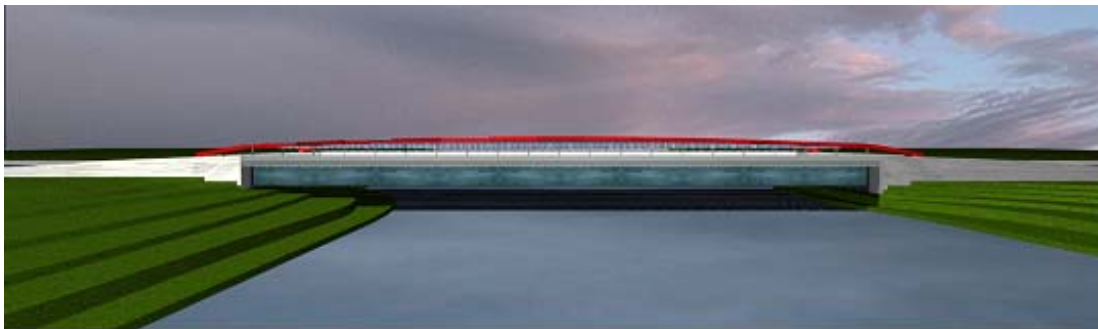
River Pranto Bridge

| | |
|-------------|----------------------------------|
| Location | Figueira da Foz, Portugal |
| Date | 2001 |
| Client | Municipality Figueira da Foz |
| Services | Detailed design |
| ABES member | ABES Portugal - GIPAC |

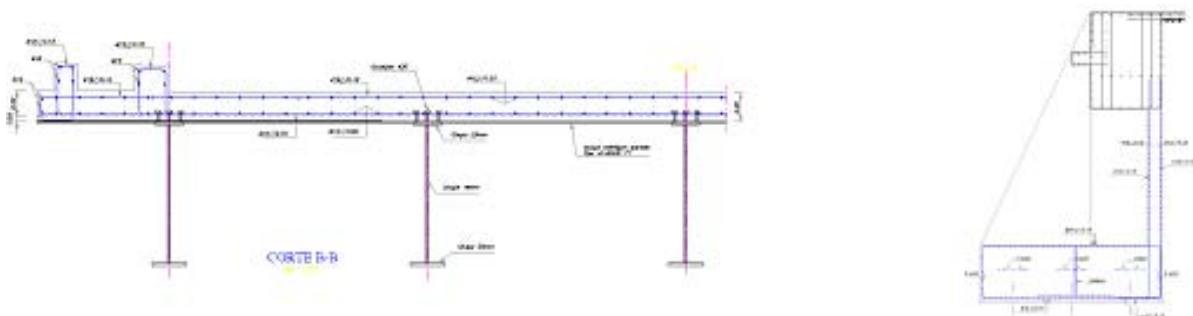


Description

This single-span integral composite bridge crosses the river Pranto near the Portuguese coast town of Figueira da Foz. The cross-section is formed by five longitudinal steel beams with an I-cross-section topped with a cast in-site concrete slab. The total span of the bridge is 27.5m and the width of the bridge deck is 11m.



Longitudinal section



Typical cross-section and abutment detail