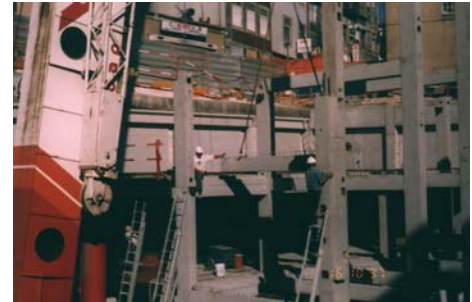


## Underground Car Park – Praça dos Poveiros

Location	<b>Porto, Portugal</b>
Client	Private Investor
Date	2005 - 2006
Services	Conceptual, preliminary and detailed design.
ABES member	ABES Portugal - <b>GIPAC</b>



### Description

This multi-level car park in Porto, Portugal, encompasses 3 underground levels with footprint areas of 74x31m<sup>2</sup> each. External concrete walls were cast in-situ in parallel to the excavation. The internal slabs were constructed from simply-supported pre-cast elements with short corbels in external walls and intermediate columns providing support.

