

## Thuan Phuoc Bridge (1/2)

Location	<b>Da Nang</b>
Client	PMU Lien Chieu – Thuan Phuoc
Date	2003
Services	Detailed design of approach bridge



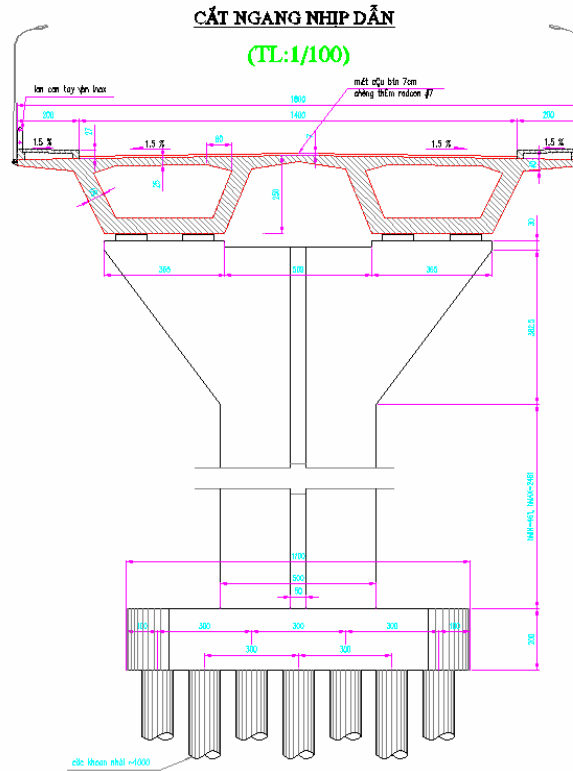
### Description

The approach viaduct to this suspension bridge was designed as a series of box girders of 50m length and 12m width. Pile foundations were chosen to provide support for the curved alignment of this bridge.

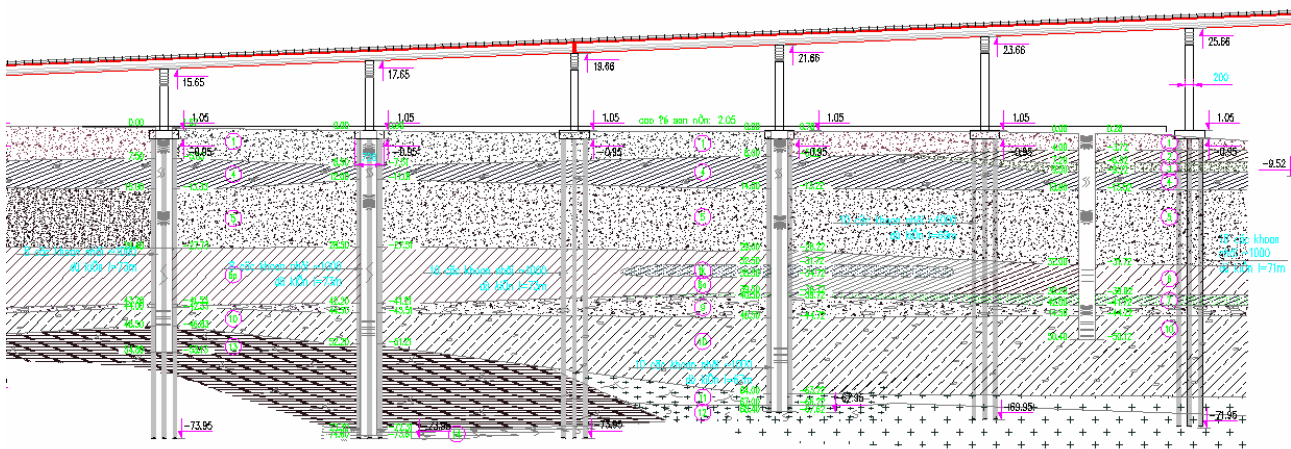
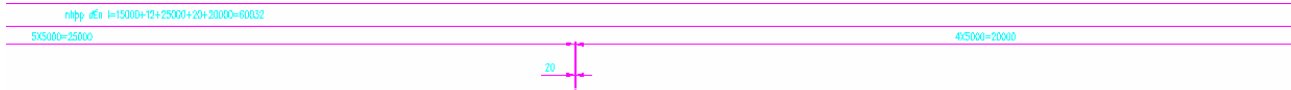


Project visualization

## Thuan Phuoc Bridge (2/2)



Typical approach span cross-section.



Longitudinal cut through part of approach viaduct.