

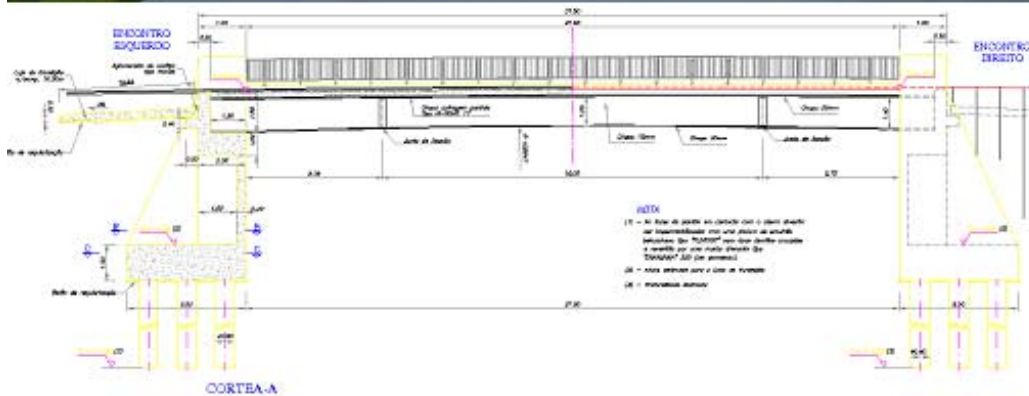
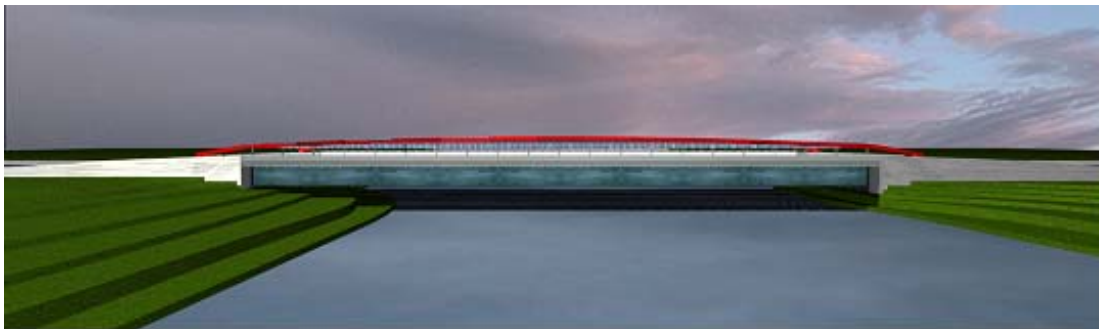
River Pranto Bridge

Location	Figueira da Foz, Portugal
Date	2001
Client	Municipality Figueira da Foz
Services	Detailed design

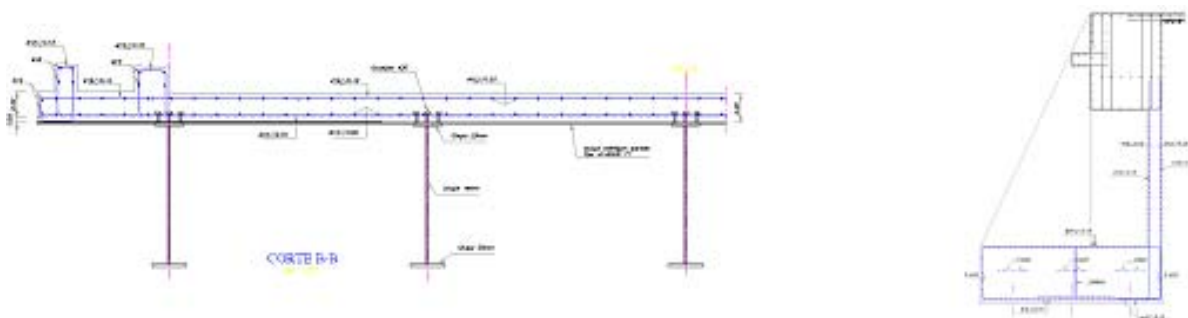


Description

This single-span integral composite bridge crosses the river Pranto near the Portuguese coast town of Figueira da Foz. The cross-section is formed by five longitudinal steel beams with an I-cross-section topped with a cast in-site concrete slab. The total span of the bridge is 27.5m and the width of the bridge deck is 11m.



Longitudinal section



Typical cross-section and abutment detail